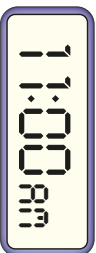
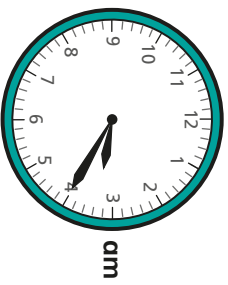
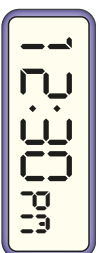
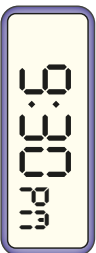
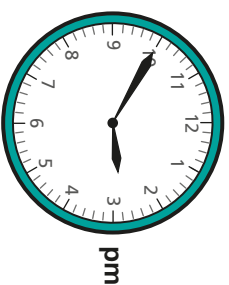
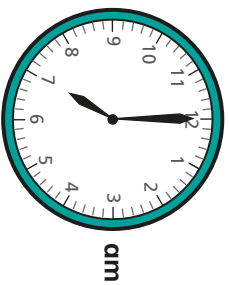


Analogue to digital – 12 hour

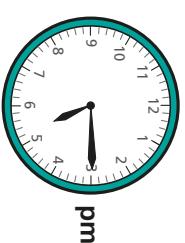
- 1 Is the time shown on the clock in the morning or the afternoon?
Sort the clocks into the table.



Morning	Afternoon

- 2 Complete the table by drawing hands on the analogue clock or writing the 12-hour digital time.

Analogue	Digital
<p>pm</p>	
<p>pm</p>	
<p>pm</p>	
<p>am</p>	



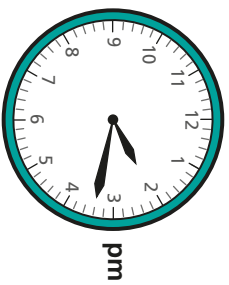
Ron is writing the time in 12-hour digital format.
What mistake has Ron made?

05:15 pm

4

Esther leaves her house at this time.

It takes her 1 hour and 45 minutes to get to her friend's house.



Write the time she arrives in 12-hour digital format.

□ : □

5

Jack and Annie are looking at what happens when you add 50 minutes to a time in the 12-hour digital format.

a)



The number in the minutes increases.

Is Jack's statement always, sometimes or never true?

b)



The number in the hours never gets smaller.

Is Annie's statement always, sometimes or never true?

Compare answers with a partner.

6

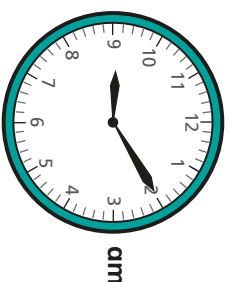
Huan is getting the bus into town.

Buses start running at 6:30 am.

They arrive every 22 minutes.

Huan is ready to leave at the time shown on the clock.

When will the next bus arrive?



7

Using the digit cards once only each time, show six different times that could be shown on a 12-hour digital clock.

You do not need to use all the cards every time.



□	□	:	□	□	□	□	:	□	□
□	□	:	□	□	□	□	:	□	□
□	□	:	□	□	□	□	:	□	□

Are there any other possible answers?

